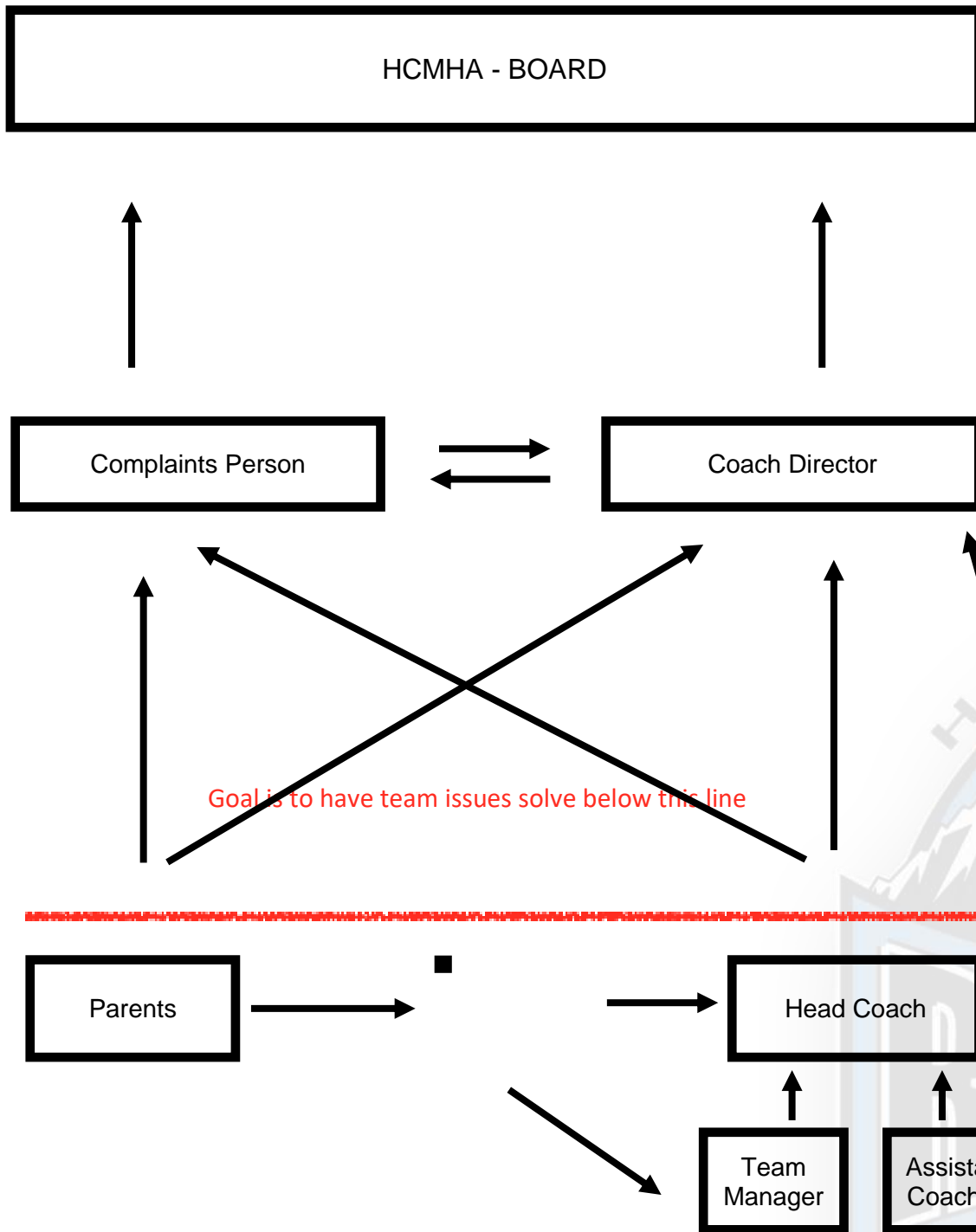


HCMHA Structure



Requirements/Duties:

In addition to what is listed on the HA coach director job description

- Coach Director must be a coach with 4 of years of coaching experience in association
- 2 year term
- Support coaches in dealings with members
- Support members in dealings with coaches
- Make recommendations to HCMHA board regarding discipline
- Communicates with HCMHA board monthly for updates
- Help schedule and sit in on all coaches pre season parent meetings
- Build a parent handout that will inform parents of what they can expect for their child at each level (Initiation - Midget) if required
- Build Parent liaison job description
- Build coaching binders (Initiation - Midget) with expectations/requirements for coaches including:
 - Team Structure along with job descriptions
 - HA/HC requirements for each level of coaching
 - Player development model (From Hockey Alberta)
 - Player management (what is and is not acceptable)
 - Skills to be taught at each level (From Hockey Alberta)
 - Pre season parent meetings template
 - Affiliation documentation
 - HCMHA values philosophy and development goals
- Build coach director binder for coach director position moving forward.
- Build visual communication chain to be distributed to all members (similar to above structure layout)

